



Installation & Getting Started Guide
IET Tools
Plug-in for CA Gen Studio

Introduction

Starting with Gen r8, CA have begun a phased migration of the existing Gen Toolset into a new Eclipse-based framework, which is known as *Gen Studio*. The initial launch of r8's Studio contains a very small number of components, or *plug-ins*, and does not provide many of the diagrams that Gen developers will be accustomed to in the old Toolset, including the Action Diagram editor.

In fact, there is no method for viewing an Action Diagram from within Studio at this time – you need to open the same model using the old Toolset to do that.

Therefore IET have developed a plug-in for Gen Studio which provides an Action Diagram viewer, based on GuardIEn's PAD extract technology.

The *IET Tools* plug-in provides this very valuable information directly within Studio, as well as demonstrating one of Gen's greatest benefits of platform independence by taking existing GuardIEn logic and porting it to the Java/Eclipse platform (GuardIEn is built with Gen!).

Installing the IET Tools Plug-in

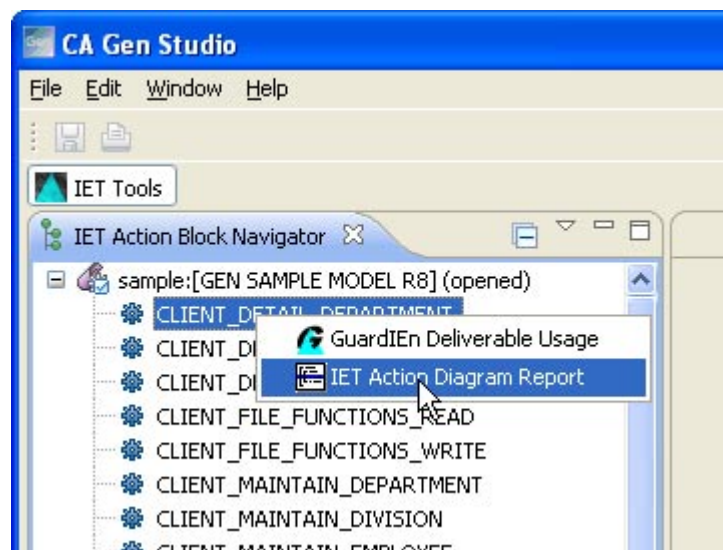
Installation of the *IET Tools* plug-in is very simple – an InstallShield setup takes you through the process resulting in the new plug-in's .jar file being placed in your Gen Studio plug-ins directory.

Gen Studio will locate the new plug-in automatically and it will be available immediately for you to start using.

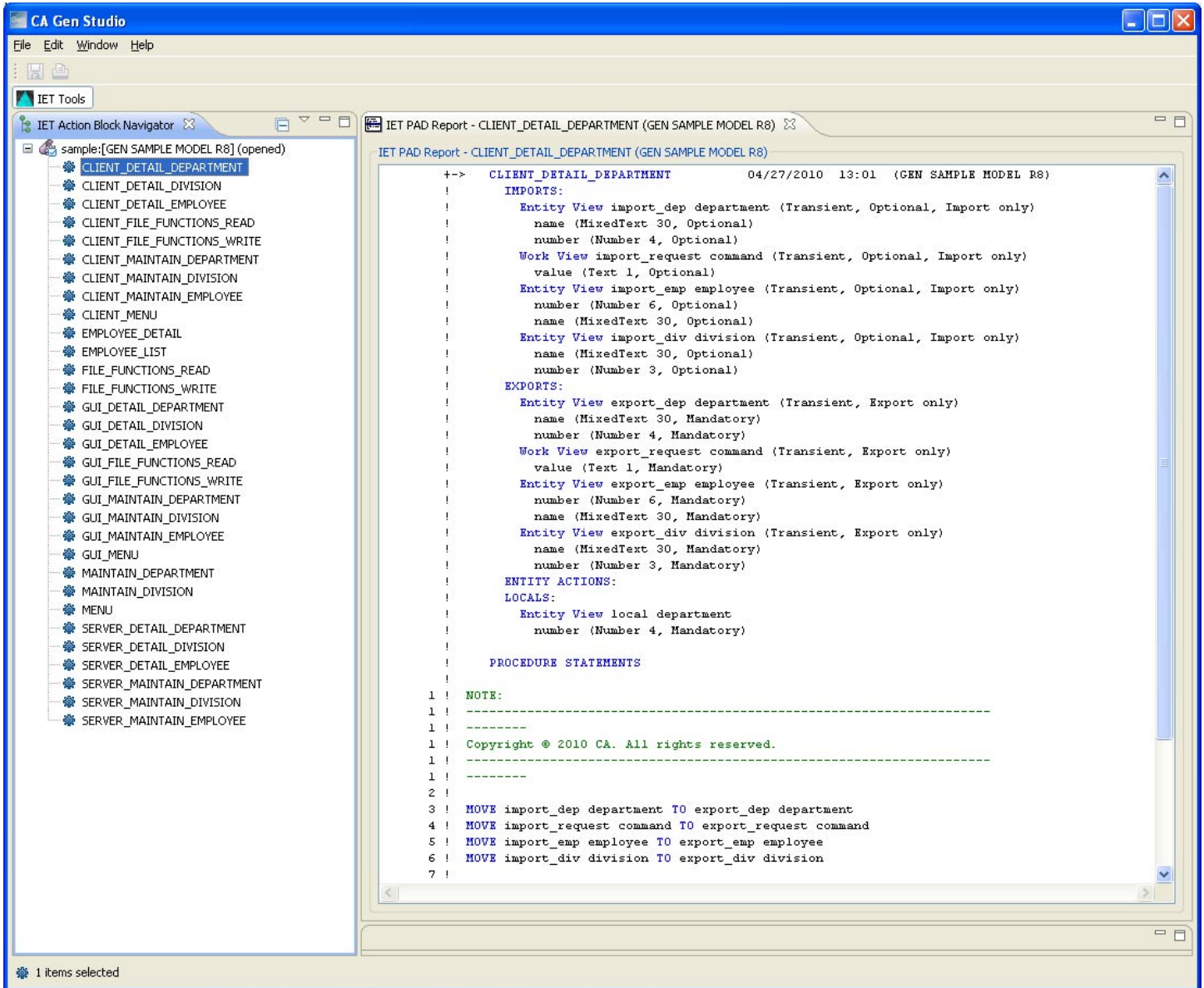
Getting Started with the IET Tools Plug-in

Using the *IET Tools* plug-in is also very easy – wherever you see a Action Block or a Procedure Step in Gen Studio's navigating trees, you can right-click and open the Action Diagram.

A new Perspective is also provided, which contains the *IET Action Block Navigator* where you can list your Action Blocks and Procedure Steps too, although you can open an Action Diagram Report using a right-click on any AB/PStep object being navigated anywhere in Gen Studio.



Doing this will open a new View in Studio showing your Action Diagram.



If you already have GuardIEn 8.1 client installed on your workstation, you also have the ability to launch the standard GuardIEn *Usage* window for any object selected in Gen Studio – this will launch GuardIEn and locate the equivalent object in your encyclopaedia to begin browsing.

